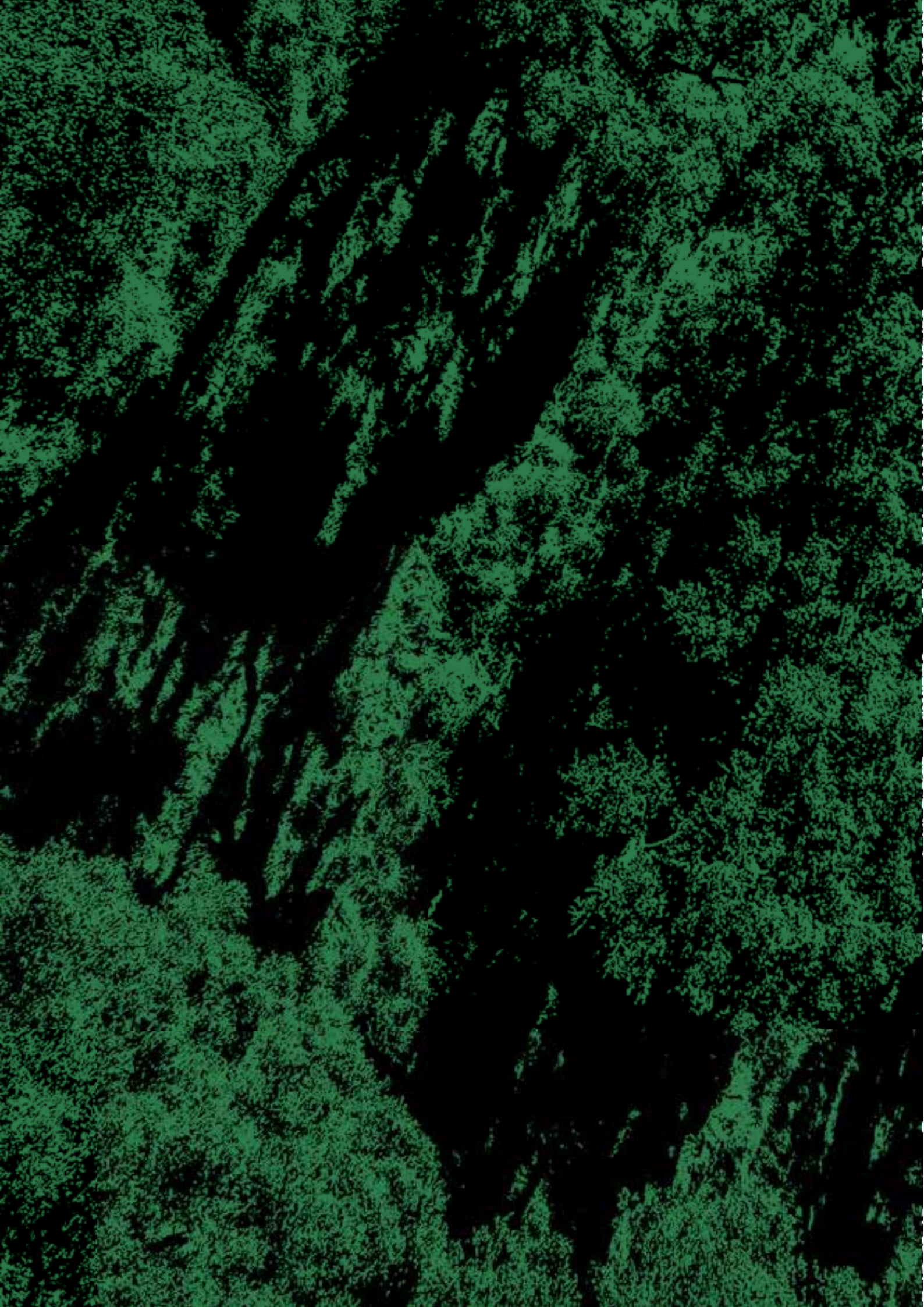

AMORIM WISE

ORIGEM

Capsule Collection



AMORIM WISE

ORIGEM

Capsule Collection

Cork and Cork Oak Forest

A



C

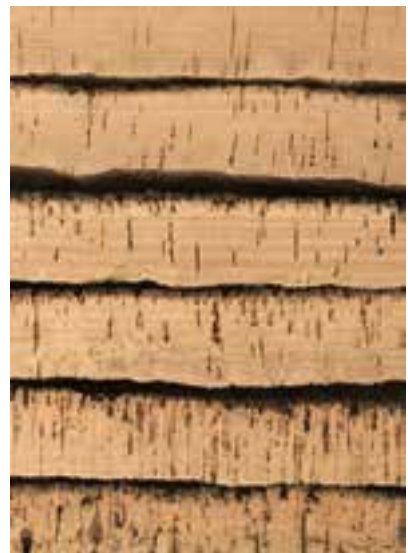


- A Montado (Cork oak Forest) and Cork Oak tree
- C Cork in its different growing stages

B



D



B Cork harvesting

D Cork pile before and after treatment

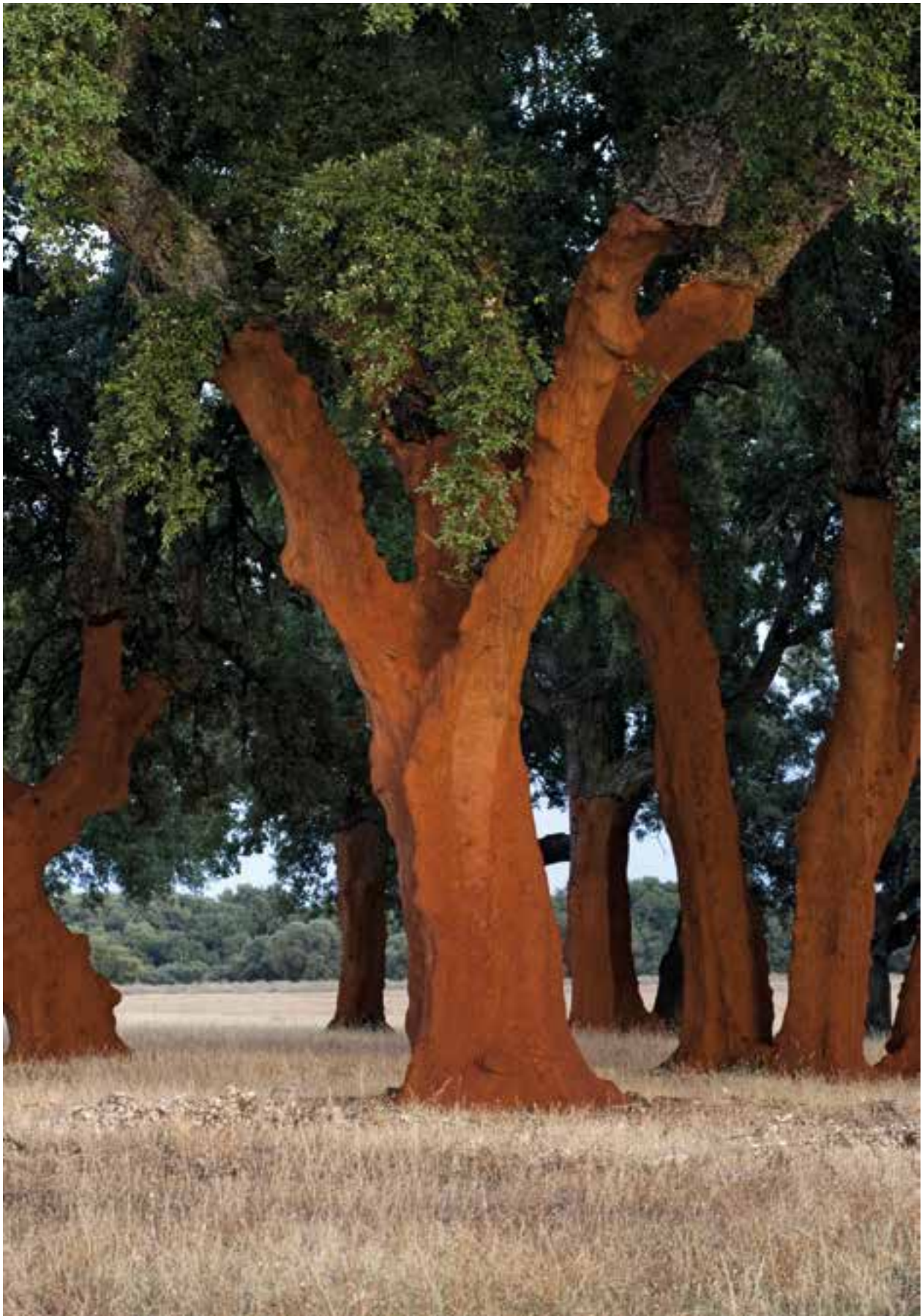
Cork and Cork Oak Forest

Cork is the outer bark of the Cork Oak tree (*Quercus suber* L), a slow growing tree from the Mediterranean basin, with a lifespan of around 200 years. Cork is a completely natural raw material, with unique properties that give it an unrivalled character. It is completely biodegradable, renewable and recyclable.

The harvesting of this unique raw material is done without ever cutting or damaging the tree and has a positive impact on the environment, as the cork oak tree plays a central role in the development of the Mediterranean region.

The Montado (cork oak forest) is one of the world's 36 biodiversity hotspots, perfectly adapted to the warm climate and arid soil, protecting against erosion and desertification. The Cork Oak Forest also provides an essential contribution to the air quality, by absorbing carbon dioxide.

In fact, cork's ability to retain CO₂ is truly remarkable – it is estimated that for each ton of cork produced, the cork oak forest can retain up to 73 tons of CO₂, a vital contribution for reducing greenhouse gas emissions, the main cause of climate change.



ORIGEM capsule collection



Origem captures the essence of the colours from the Montado, the fragile and important ecosystem where cork has its origins. The greens and oranges are the background tones of this landscape, that slowly changes its hues each harvesting season.

The collection transports different colour elements of this landscape to our everyday life, adding a touch of nature to our homes and offices.

Comprising 8 new colours for flooring and 2 new colours for wall coverings, Origem takes its orange and green tones from nature, adding bright yellow and grey as contrasting elements.

A COLOUR
PALETTE
FROM NATURE
WHERE COLOUR
IT

R
TAKEN
TURE,
CORK HAS
S ORIGIN.



Identity ————— Coral



cork pure

IDENTITY

SHELL



Terracotta



Apricot



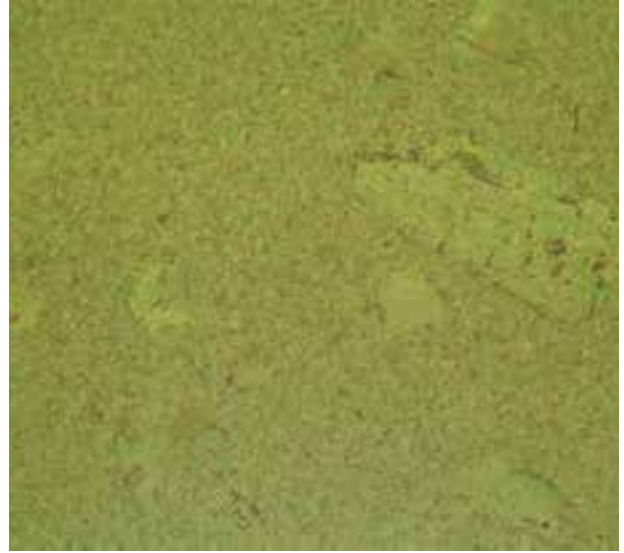
Coral

AMORIM WISE

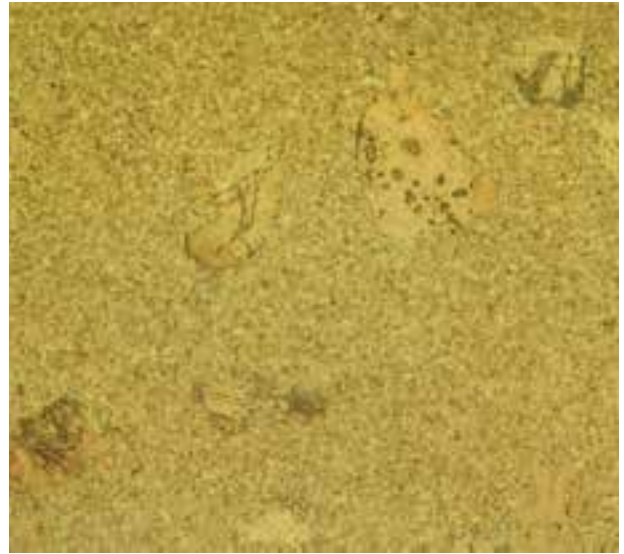
IDENTITY

SHELL

Leaf



Olive



Moss



cork pure

IDENTITY



SHELL



Sunflower



Bark



Sustainability



Cork benefits

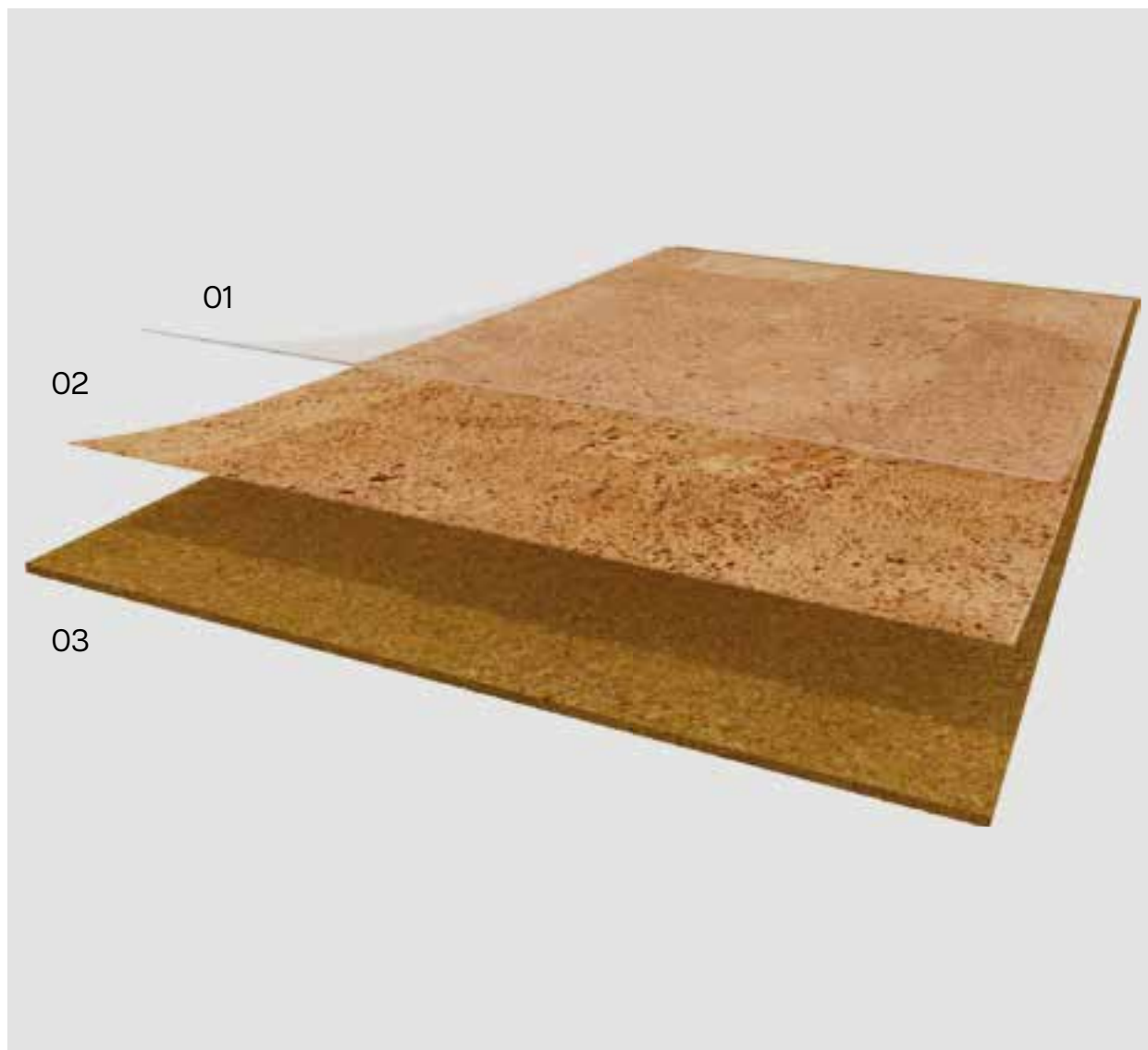


Large installation areas



Unique designs





900x600mm
900x300mm
Thickness 8mm

FINISHING
HRT / PU Pre-finished

01 Protective Surface
02 Genuine Cork Veneer
03 Agglomerated Cork



Fiord ————— Apricot



dekwall

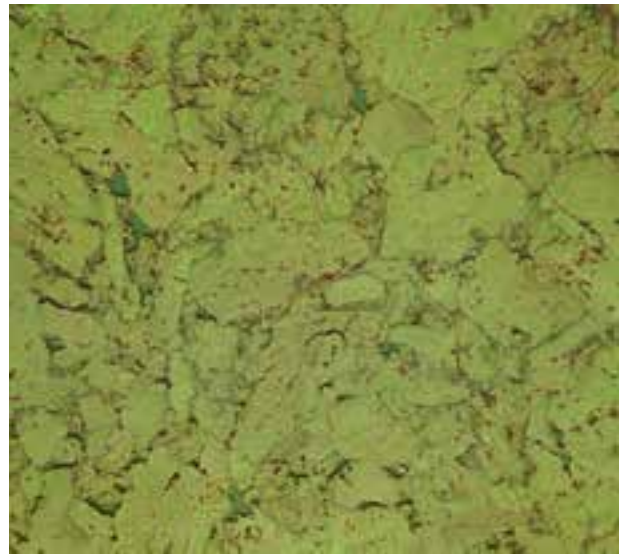
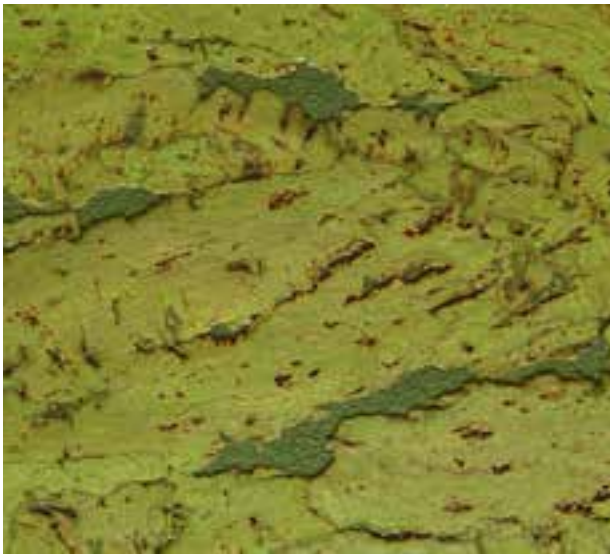
FIORD



HAWAI



Apricot



Leaf

Sustainable wall coverings

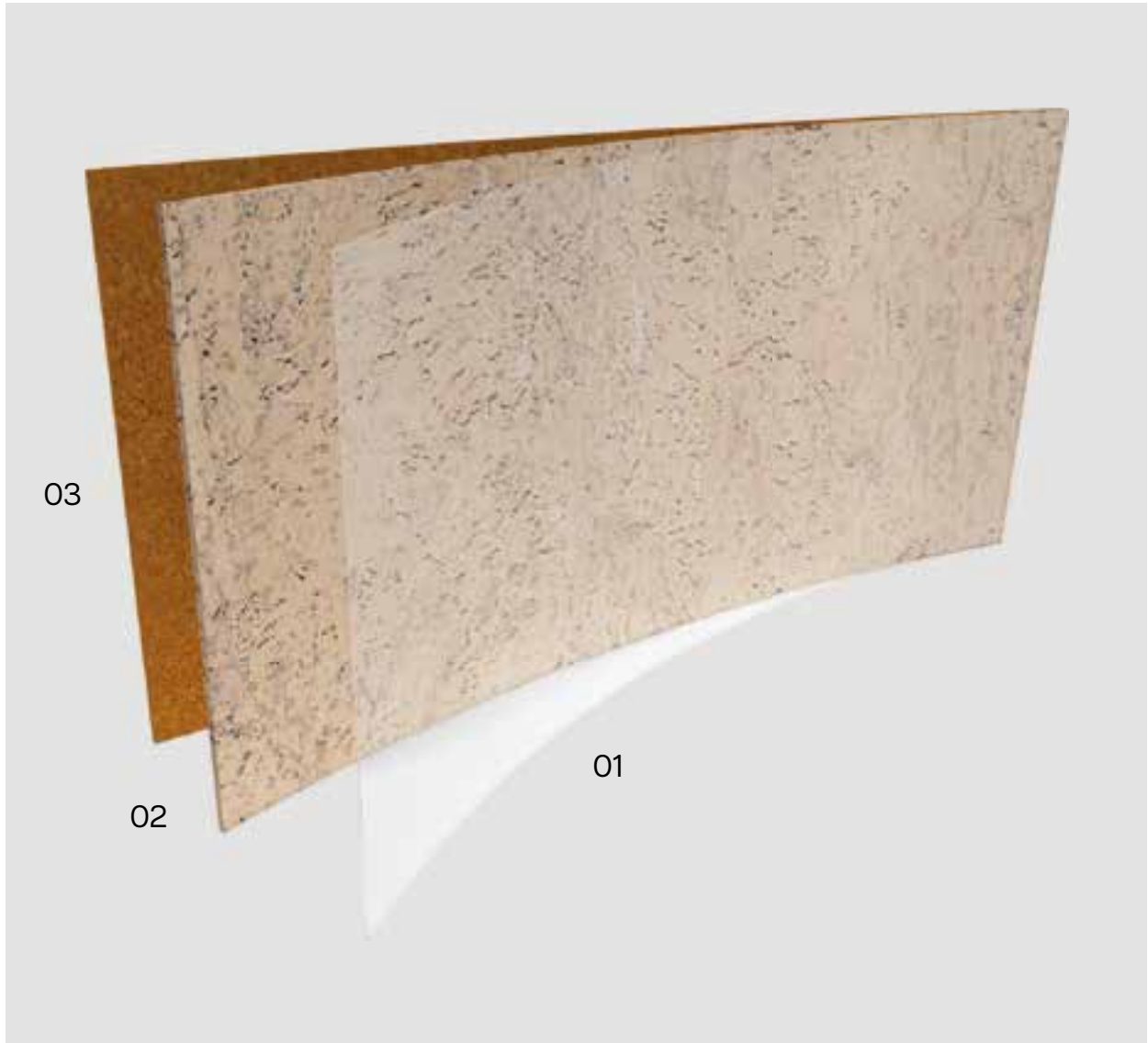


Extra comfort



Unique designs





600x300mm
Thickness 3mm

FINISHING
Wax/PU Pre-finished

01 Protective Finish
02 Genuine Cork Veneer
03 Cork Agglomerate Core

BRIGHT C
CREATIV

COLOURS,
THE SPACES.











CO
RK











NATURAL

LY

DURABLE.

TECHNICAL DATA SHEET	STANDARD	UNIT / REQUIREMENT	VALUE			
Dimension (LxWxT)	-	mm	900 x 600 x 8		900 x 300 x 8	
Finishing			PU PF	HRT	PU PF	HRT
Mass per unit	-	Kgs / m ²	4,48		4,48	
Packaging (box / pallet)	-	m ²	3,78 / 136,08		5,4 / 129,6	
Level of use Domestic	ISO 10874	Class	23	23	23	23
Level of use Commercial	ISO 10874	Class	-	33		33
GENERAL PROPERTIES - EN 12104						
Side length Squareness and Straightness of edges for side length ≤ 400 mm / > 400 mm	EN ISO 24342	deviation from nominal: ≤ 0,2 % up to 1,0 mm maximum deviation allowed: ≤ 0,5 / ≤ 1,0	Complies	Complies	Complies	Complies
Overall thickness mm	EN ISO 24346	≥ 4,0	Complies	Complies	Complies	Complies
Apparent density average - individual results	EN ISO 23997	≥ 450 kg/m ³	Complies	n.a.	Complies	n.a.
		≥ 500 kg/m ³	n.a.	Complies	n.a.	Complies
Wear resistance IP	EN 14354 (Annex D)	≥ 7 500 cycles	n.a.	Complies	n.a.	Complies
Dimensional stability %	EN ISO 23999	≤ 0,25	Complies	Complies	Complies	Complies
Curling mm	EN ISO 23999	≤ 2	Complies	Complies	Complies	Complies
Residual Indentation	EN ISO 24343-1	≤ 0,4	Complies	n.a.	Complies	n.a.
		≤ 0,2	n.a.	Complies	n.a.	Complies
Simulated movement of a furniture leg	EN 424	No damage shall be visible after testing with type 2 foot	No visible damage	No visible damage	No visible damage	No visible damage
SAFETY PROPERTIES - EN 14041						
Fire resistance	EN ISO 11925-2 + EN ISO 9239-1: Class EN 13501-1	Class	Cfl-S1	Cfl-S1	Cfl-S1	Cfl-S1
Slip Classification	EN 13893	Class	DS	DS	DS	DS
Formaldehyde emission	EN 717-1	Class	E1	E1	E1	E1
Content pentachlorophenol (PCP)	EN 12673	% mg/kg	Undetectable	Undetectable	Undetectable	Undetectable
ADDITIONAL PROPERTIES						
Impact sound reduction	EN ISO 10140	dB (ΔL _w)	13	13	13	13
Walking noise	IHD-W431	dB %	21,9 70		21,9 70	
Thermal resistance (Thermal conductivity)	EN ISO 10456	m ² ·K/W	0,15	0,102	0,15	0,102

TECHNICAL DATA SHEET	STANDARD	UNIT	VALUE
Dimension (LxWxT)	EN 427	mm	600 ± 0.5% 300 ± 0.5%
Mass per unit	-	Kg/m ²	0,95
Packaging (box / pallet)	-	m ²	5,94 / 213,84
Squareness	EN 427	mm	600: < 1.0mm 300: < 0.5mm
Thickness	ISO 7322	mm	3.0 ± 0.3%
Apparent density	EN 672	Kg/m ³	≥ 200
Dimension stability	EN 434	%	3.0 ± 0.3%
Curling	EN 434	MM	≤ 6
Moisture content	EN 12105	%	≤ 7
Formaldehyde	EN 12149, method C	mg/Kg	≤ 95
Vinyl Chloride Monomer (VCM)	EN 12149, TEST B	mg/Kg	≤ 0,2
Thermal Resistance	EN 12667	m ² K/w	0.0572 (Varnished) 0.0583 (Waxed)
Reaction to Fire	EN 15102: 2007	Class	E
Sound Absortion	ISO 354	aw	0,1
Release of heavy metals and specific elements	EN 12149		fulfilled



FRENCH REGULATION ON VOC EMISSIONS

French certification, that classifies products according to their level of voc emissions. Our products have been classified at the highest level (A+).

Dekwall



GREENGUARD CERTIFICATION

Greenguard North american certification identifies products that have low chemical emissions, improving the air in which they are used. Our products are awarded with the GOLD certification. A stricter certification criteria that ensures that a product is acceptable for use in environments such as schools and healthcare facilities.

Cork Pure



CE

CE making is a certification mark that indicates conformity with the health, safety and environmental protection standards for products sold within the european Economic Area (EEA).

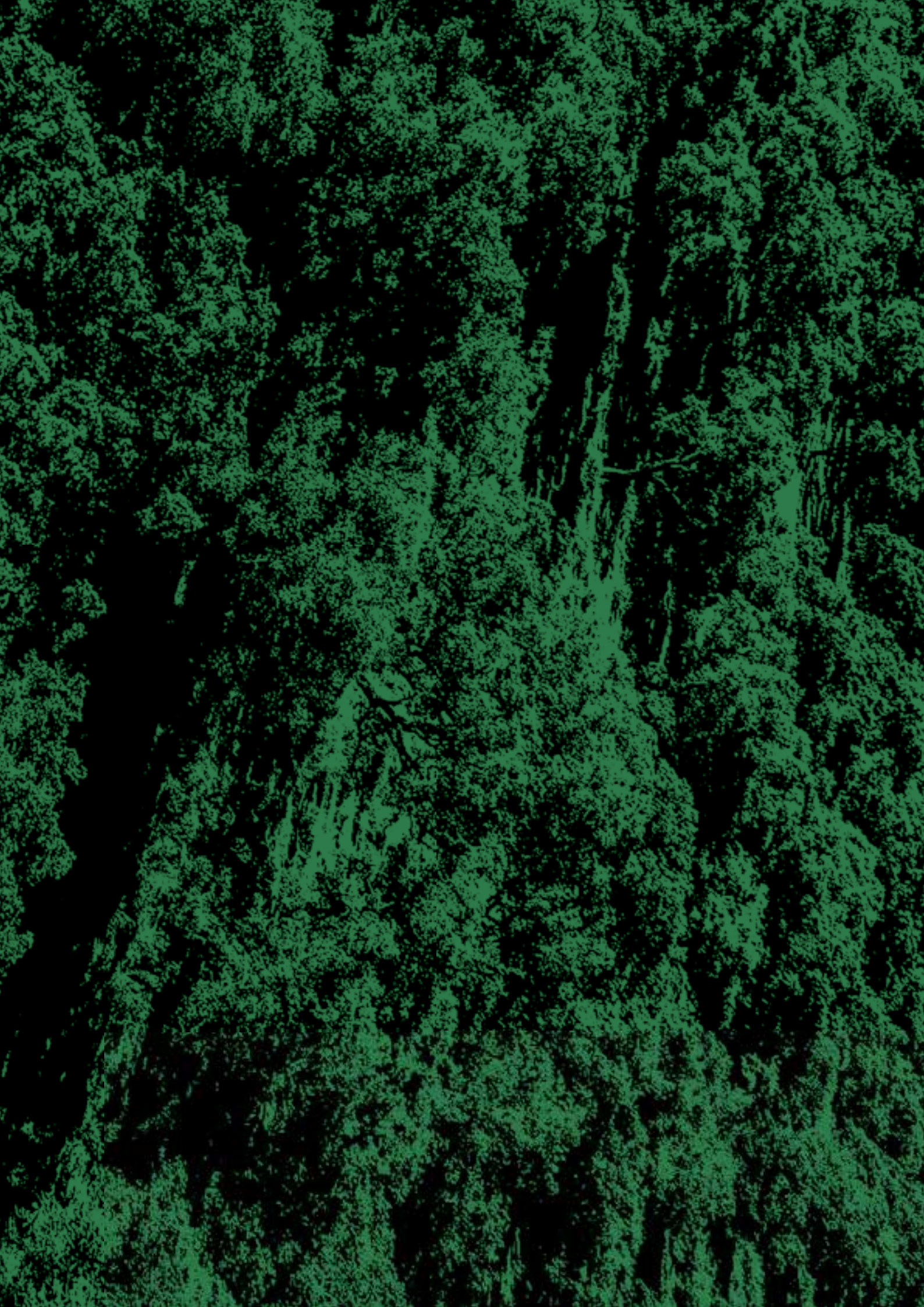
Cork Pure & Dekwall



TÜV PROFICERT

A transnational certificate for voc-emission and air quality, certifying that a product complies with different national regulations such as AgBB (Germany), Belgian voc regulation, Finnish M1, breeam, leed v4 (outside North America), ral -uz 120 and Austrian Eco Label (Guideline uz 56).

Dekwall



Amorim Cork Flooring, S.A.

Rua do Ribeirinho 202 - P.O. Box 13

4536-907 S. Paio de Oleiros - Portugal

T. +351 22 747 56 00 E. info.acf@amorim.com



DE	Amorim Deutschland GmbH	(+49) 4221 5 93-01	info.acf.de@amorim.com
BE NE LUX	Amorim Benelux B.V.	(+31) 166 604 111	info.acf.bnl@amorim.com
AT	Amorim Deutschland GmbH	(+43) 1 54 51 65 10	info.acf.at@amorim.com
CH	Amorim Flooring Switzerland AG	(+41) 41 726 20 20	info.acf.ch@amorim.com
PT	Amorim Cork Flooring, S.A.	(+351) 227 475 600	info.acf@amorim.com
ES	Amorim Cork Flooring, S.A.	(+351) 227 475 600	info.acf.es@amorim.com
FR	Amorim Cork Flooring, S.A.	(+33) 800 914 848	info.acf.fr@amorim.com
DK	Timberman Denmark A/S	(+45) 995 252 52	timberman@timberman.dk
PL	Dom Korkowy, Sp. z o.o.	(+48) 126 379 639	krakow@domkorkowy.pl
US	Amorim Flooring North America	(+1) 410 553 60 62	info.acf.us@amorim.com
RU	Amorim Flooring Rus, OOO	(+7) 495 280 7860	info.acf.ru@amorim.com
IT	Amorim Cork Flooring, S.A.	(+39) 068 635 7287	info.acf.it@amorim.com
FI	Korkkitrio Oy	(+358) 50 554 2616	wicandersmyynti@korkkitrio.fi
SW	Amorim Flooring Sweden	(+46) 311 077 40	info.acf.se@amorim.com



INVESTORS IN PEOPLE™
We invest in people Standard